



God's Grand Design

Exploring Origins in Science and Scripture

Part 11

**How did the
Grand Canyon
form?**



THE ARK
AND THE
DARKNESS

MARCH 20 & 21 ONLY

GENESIS **BEVERFOLD** FATHOM
epi-geotics FILMS PRESENTS

Get on the class email list:

josh@trc.life

Verses and Models

Verse: Genesis 6:15 This is how you are to make [the ark]: the length of the ark [450 feet], its breadth [75 feet], and its height [45 feet].

Model: What did the ark actually look like?



Verses and Models

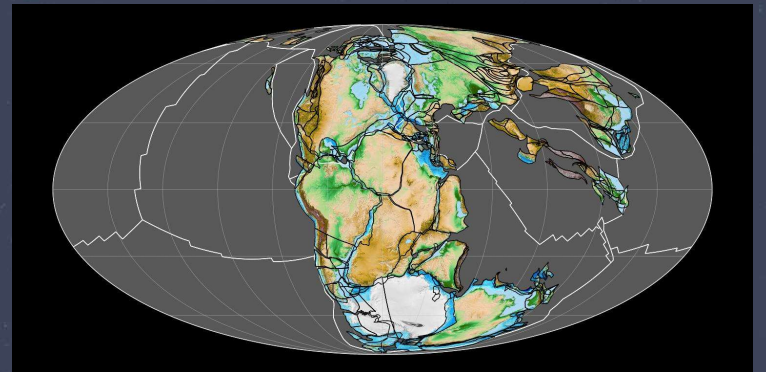
Verse: Genesis 7:11 In the six hundredth year of Noah's life, in the second month, on the seventeenth day of the month, on that day all the fountains of the great deep burst forth, and the windows of the heavens were opened.

Model: Canopy theory. Hydroplate theory.
Catastrophic plate tectonics theory.

Verses and Models

Genesis 7:24 And the waters prevailed on the earth 150 days.

Model: The formation of the geological column.
Flood boundary. Super continent models.



Verses and Models

Verse: Genesis 8:2 The fountains of the deep and the windows of the heavens were closed, the rain from the heavens was restrained, 3 and the waters receded from the earth continually. At the end of 150 days the waters had abated.

Model: Erosional models. The formation of the Grand Canyon.

Two Theories of Origins

**View #1 – God created the heavens and the earth.
(in six days, thousands of years ago)**

**View #2 – The heavens and earth evolved without
God. (millions and billions of years ago)**

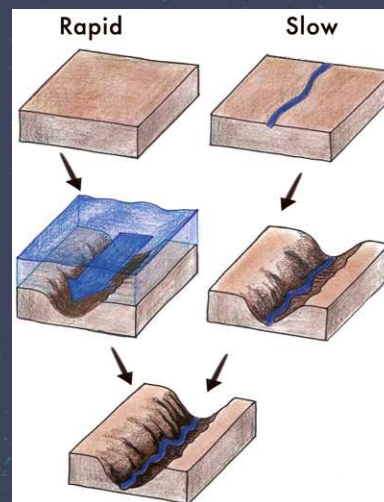
Flood: There was a time when the entire world was covered with water as the result of a year-long Flood. This was a judgment from God on all human and land dwelling life. It resulted in the death of all humans (and animals) who were not in the Ark during the Flood (**Genesis 6-9**).

trc.life/flood

Geology: the study of the earth's physical structures, it's history and the processes that form them.



View #1 - Creation View	View #2 - Evolutionary View
A one year Global Flood happened about 4,500 years ago.	A Global Flood never happened.
The earth's surface was shaped by sudden, violent, and catastrophic processes.	The earth's surface was shaped by slow, gradual processes over 4.5 billion years.
Catastrophism	Uniformitarianism
The past (the Flood) is the key to the present.	The present is the key to the past
Lots of water, little time	Lots of time, little water



Geological Laws

A. Super position

B. Lateral Continuity

C. Original Horizontality

D. Cross-cutting relationships

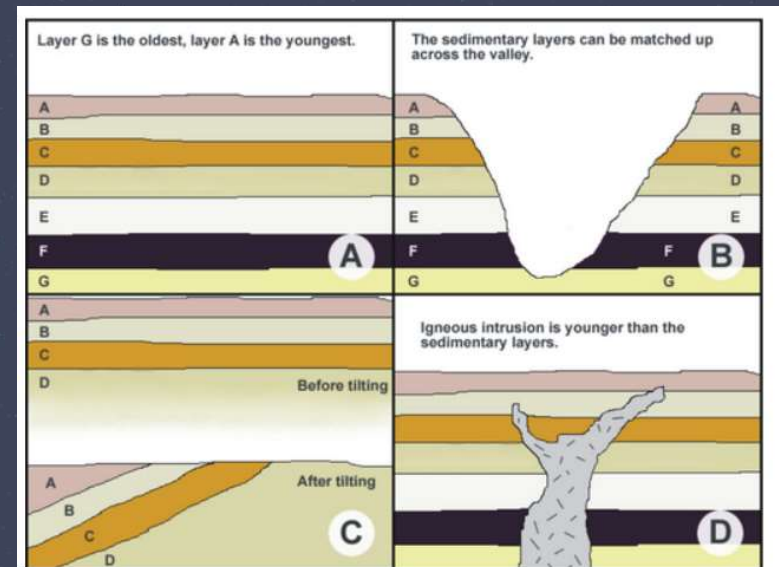


Figure 11.18: Illustration of Steno's Laws.

Sedimentary rock:

typically composed of sediment like mud, sand and gravel that has changed into rock, primarily formed under water.

OBSERVATIONS:

70-75% of the planet is covered with ~ 1 mile of sedimentary rock.

Evidence for a Global Flood in the Geological Column:

- A. Lack of erosion between layers.**
- B. Continental wide layers.**
- C. Cross bedding.**
- D. Large cobbles and boulders.**
- E. Soft sediment deformation.**

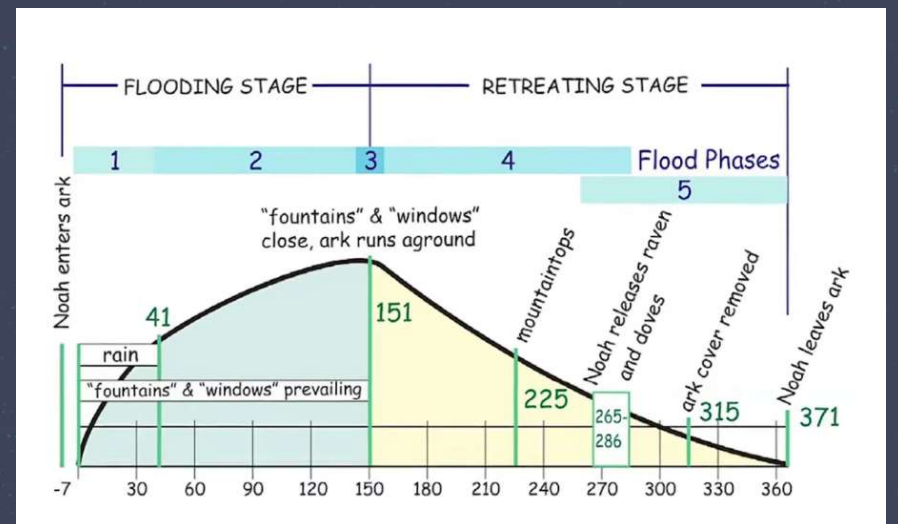
Sedimentary rock:
typically
composed of
sediment like
mud, sand and
gravel that has
changed into
rock, primarily
formed under
water.

OBSERVATIONS:
70-75% of the
planet is covered
with ~ 1 mile of
sedimentary rock.



4 Phases of the Global Flood:

1. **Deposition of sedimentary rock.**
2. **Plate tectonics.**
3. **Sheet flow erosion.**
4. **Channelized erosion.**



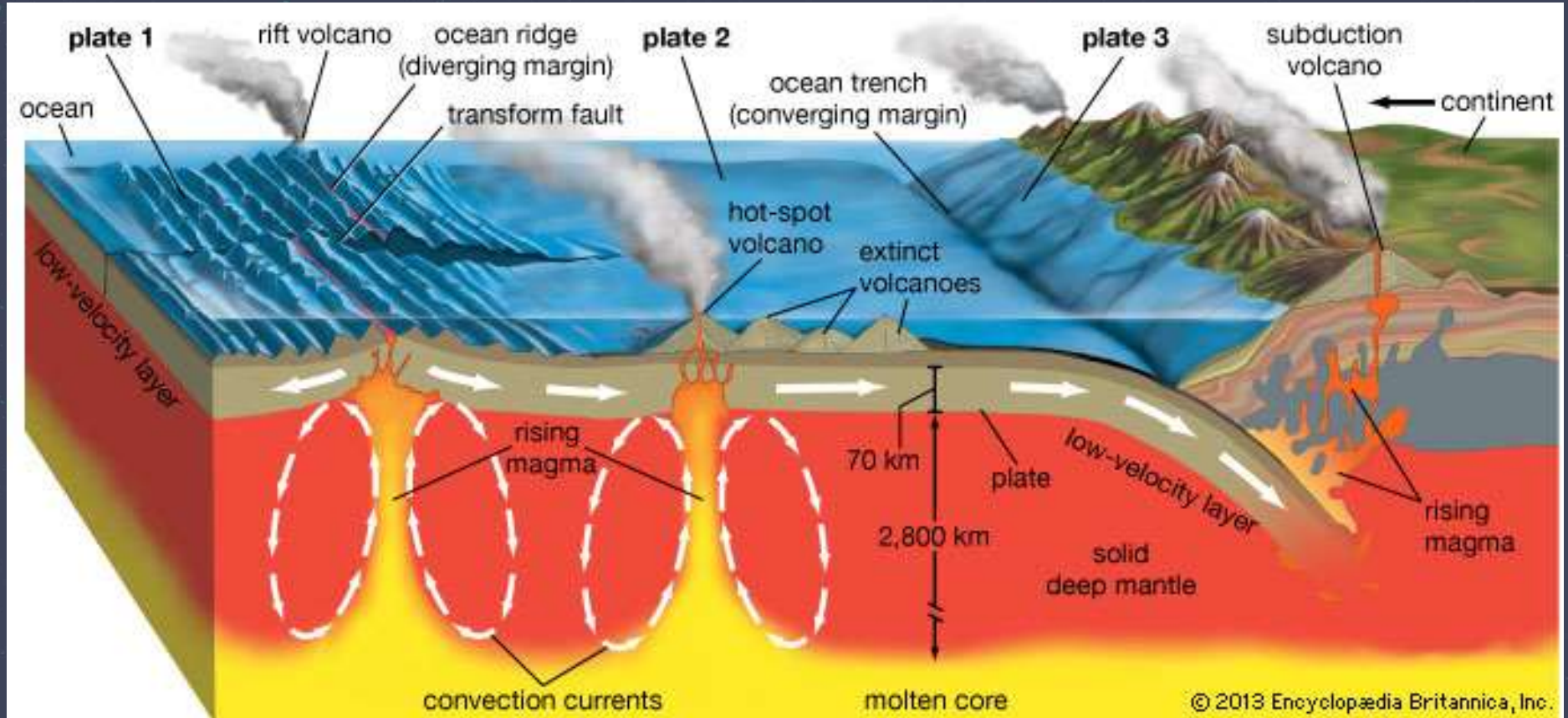


Plate tectonics

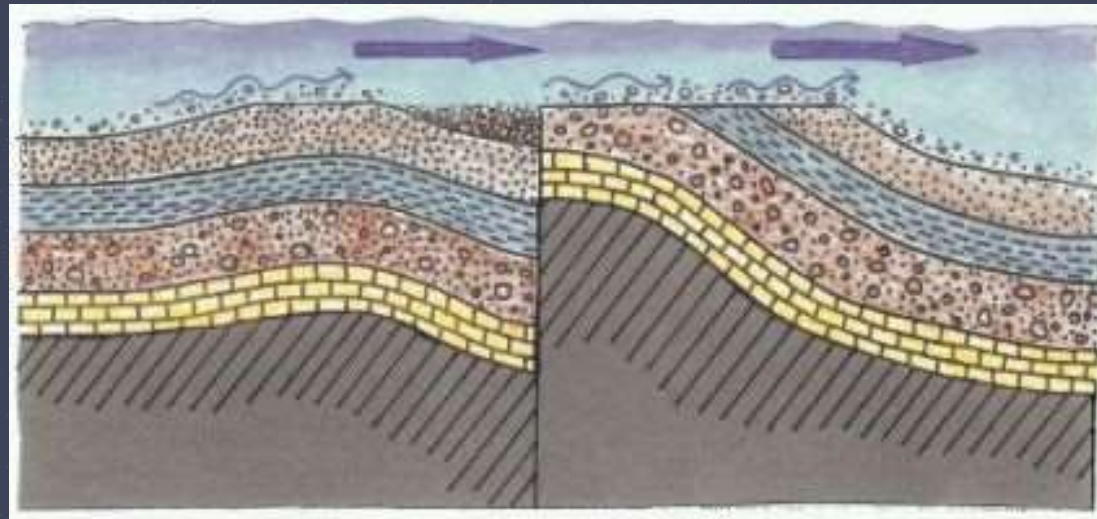
4 Phases of the Flood:

- 1. Deposition of sedimentary rock.**
- 2. Plate tectonics.**
- 3. Sheet flow erosion. (wide sheets of water eroding the earth's surface).**
- 4. Channelized erosion.**

Erosion: the geological process in which earthen materials are worn away and transported by natural forces such as water or wind.

Planation Surfaces:

Mountains and hills have been “planed off” into flat features by the retreating flood waters.



Planation Surfaces: (Canada)

Mountains and hills have been “planed off” into flat features by the retreating flood waters.



Planation Surfaces: (Wyoming)

Mountains and hills have been “planed off” into flat features by the retreating flood waters.



Planation Surfaces: (Ethiopia)

Mountains and hills have been “planed off” into flat features by the retreating flood waters.



Planation Surfaces: (Australia)

Mountains and hills have been “planed off” into flat features by the retreating flood waters.



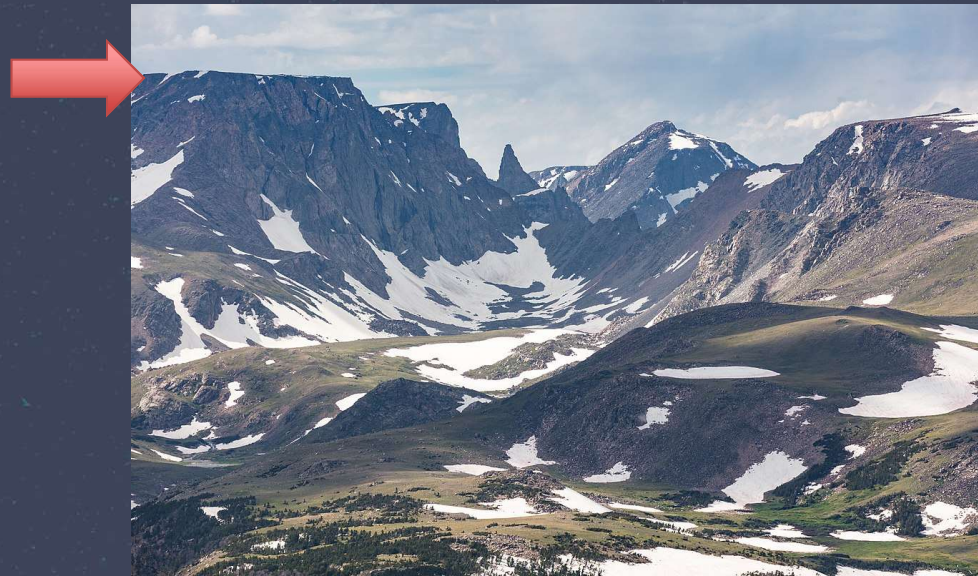
Planation Surfaces: (Arizona)

Mountains and hills have been “planed off” into flat features by the retreating flood waters.



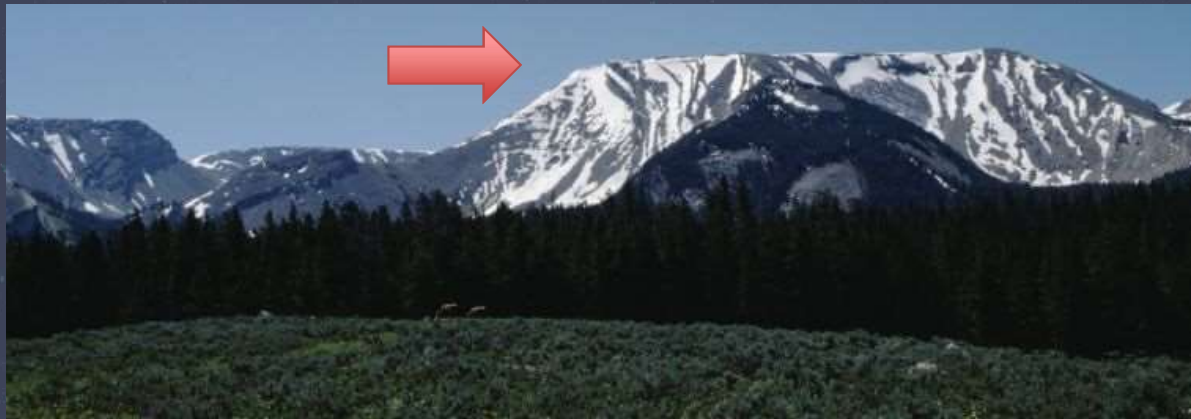
Planation Surfaces: (Montana)

Mountains and hills have been “planed off” into flat features by the retreating flood waters.



Planation Surfaces: (Wyoming)

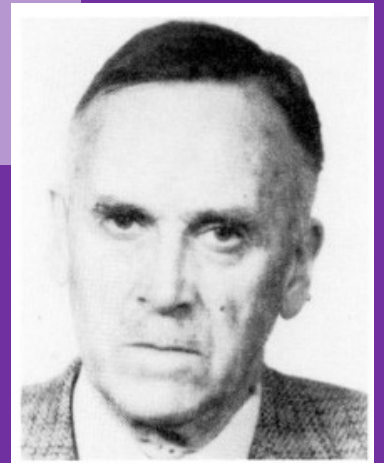
Mountains and hills have been “planed off” into flat features by the retreating flood waters.



“Such landscape as flat-topped hills or high plateau shows no process in action that might favor or maintain its flatness. Consequently, one cannot say that any geological work now observable has made it as flat as it is. The completion of its flattening appears to have been in the past...

....All this evidence tends to indicate unity and simple design among these flat surfaces, and to encourage the hope that the business of seeking their origin is not little problems, but one major problem.”

Geomorphologist, C.H. Crickmay



“The existence of planation surfaces is asserted by a host of writers, yet few attempt any serious explanation of their development. It is perplexing that after a century of argument and observation of the continents, no generally accepted mechanism for planation has been forthcoming.”

Thomas and Summerfield, Geomorphologists



Evidence for a Global Flood:

A. Planation surfaces.

Del Tackett in SLC!



Mount St. Helen's Eruption:

1980



https://www.youtube.com/watch?v=kjdZ3Gs-PTk&ab_channel=IsGenesisHistory%3F

1:18-5:09

Mount St. Helen's Eruption:

1980



https://www.youtube.com/watch?v=kjdZ3Gs-PTk&ab_channel=IsGenesisHistory%3F

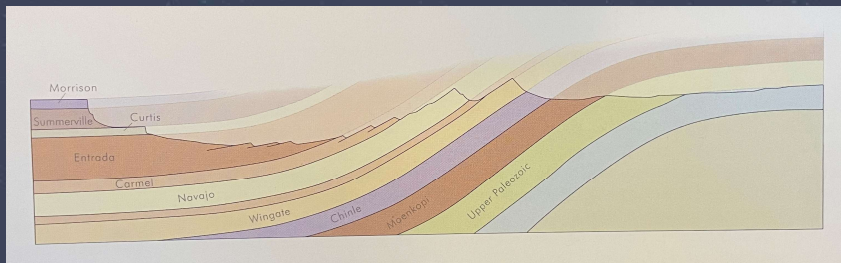
18:17 – 19:51

Evidence for a Global Flood:

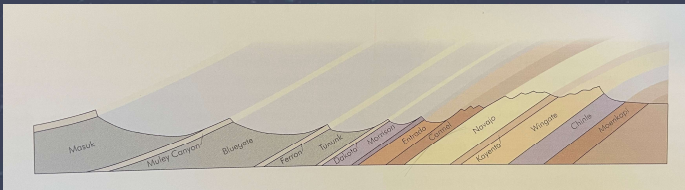
A. Planation surfaces.

B. Massive planetary erosion.

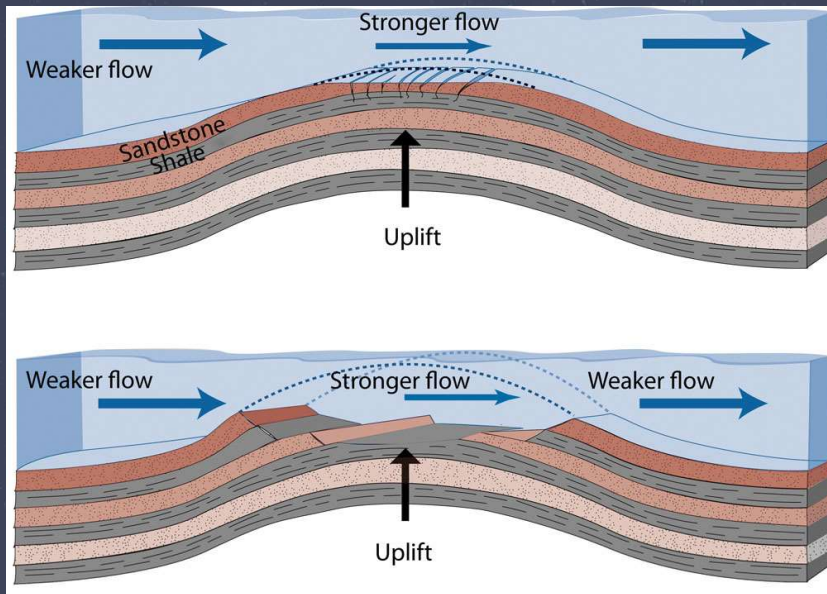
San Rafael Swell (Green River, UT)



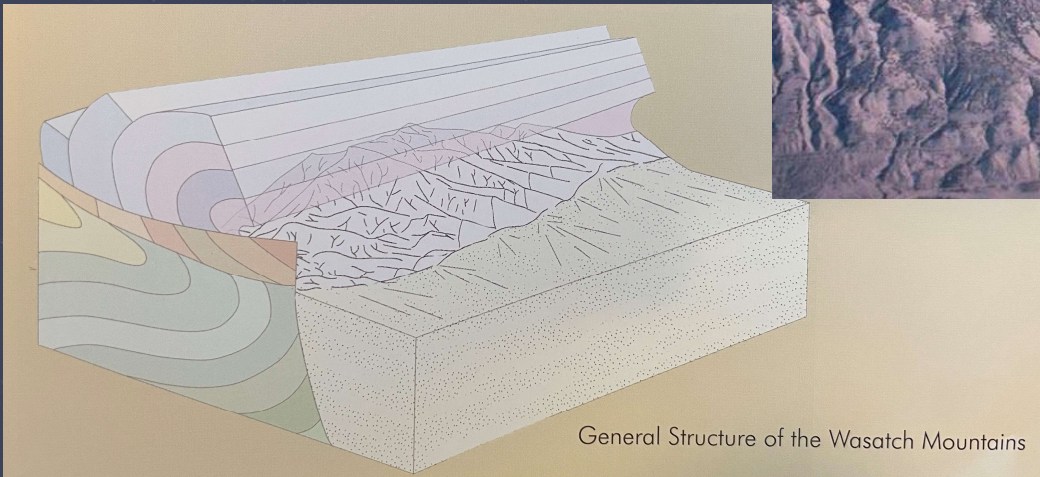
Waterpocket Fold (Capitol Reef NP)



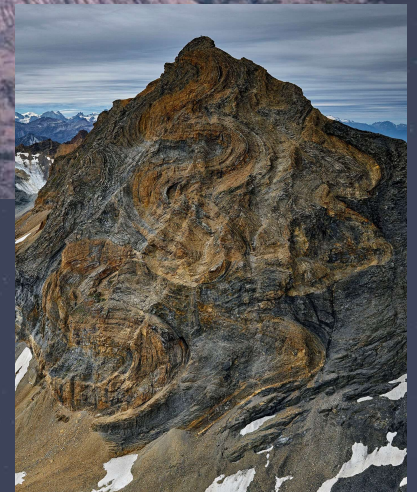
Virgin Anticline (St. George, UT)



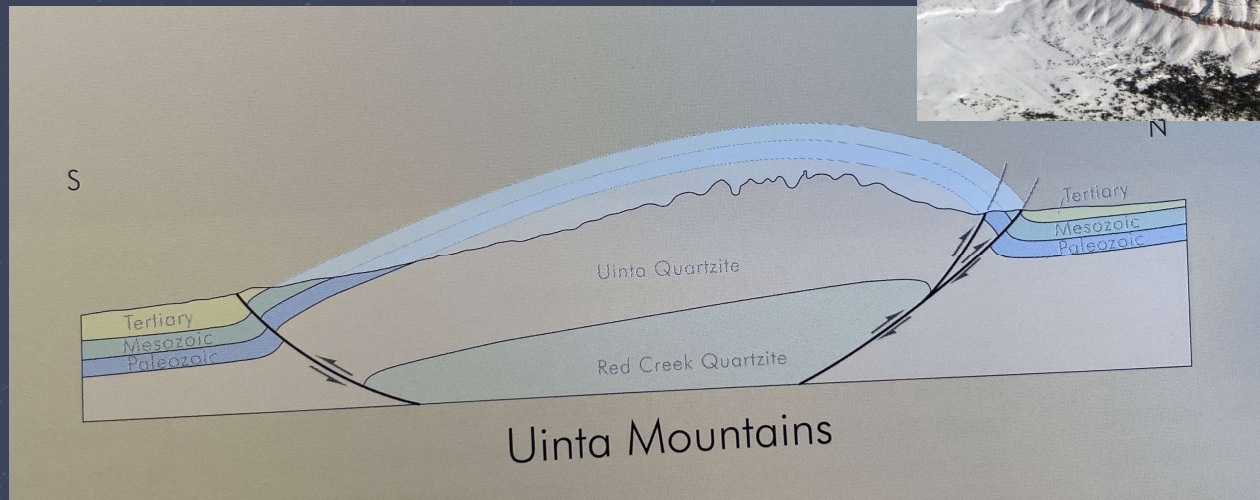
Wasatch Mountains (Ogden - Provo)



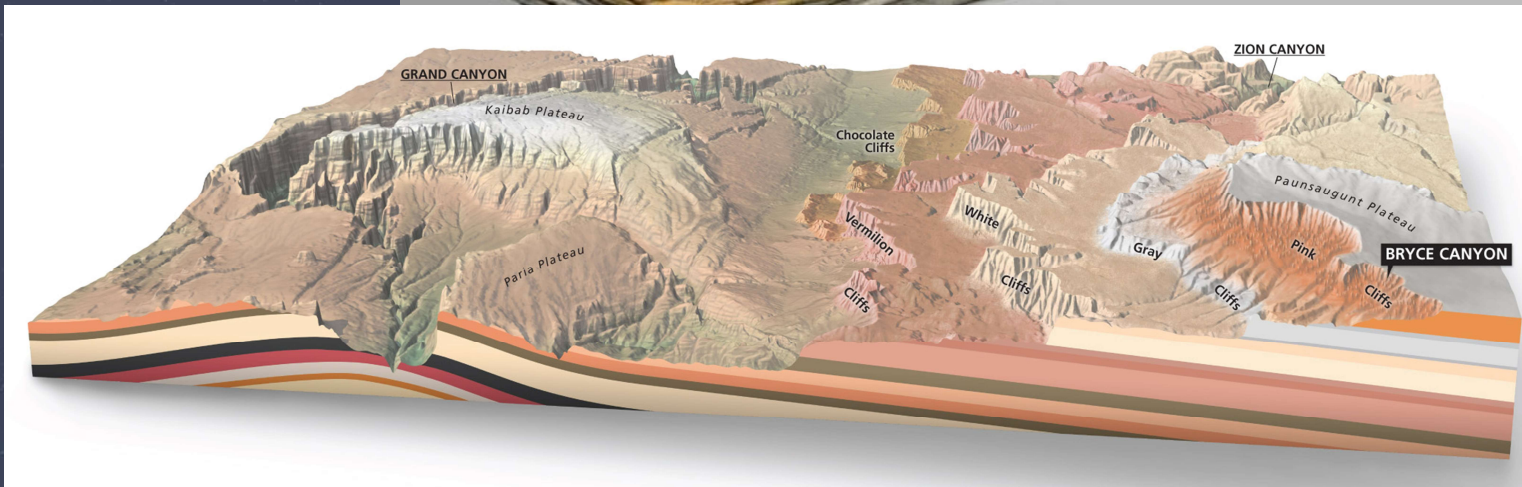
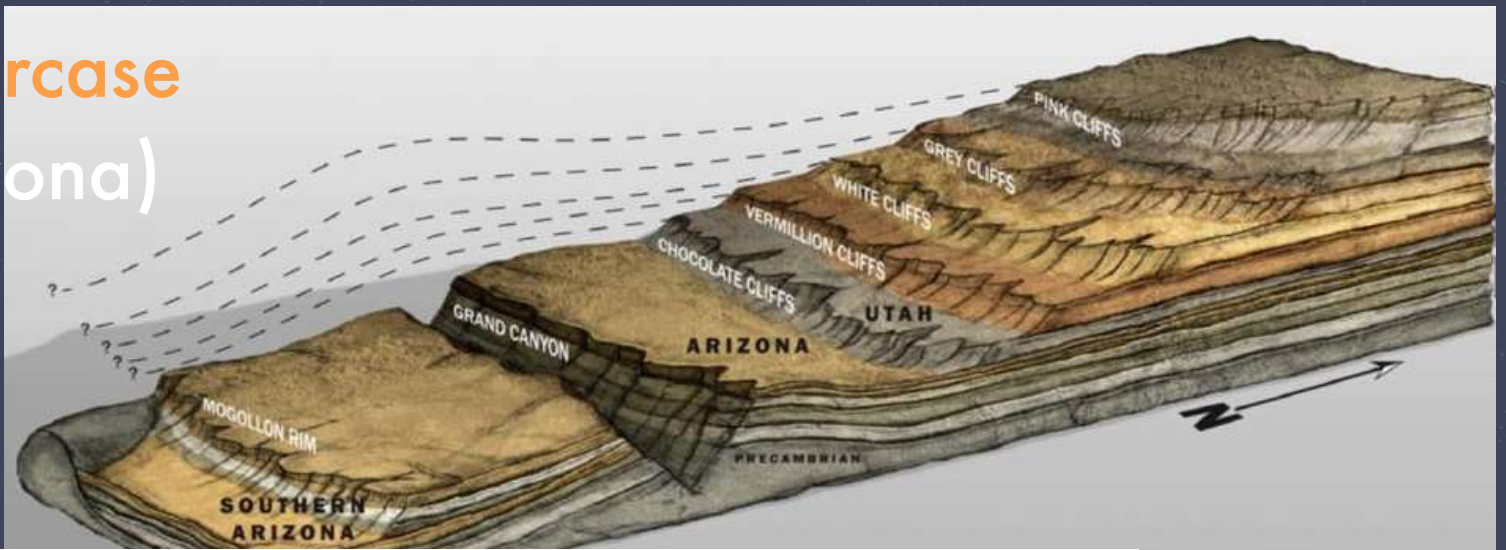
General Structure of the Wasatch Mountains



Uinta Mountains (East of Park City)



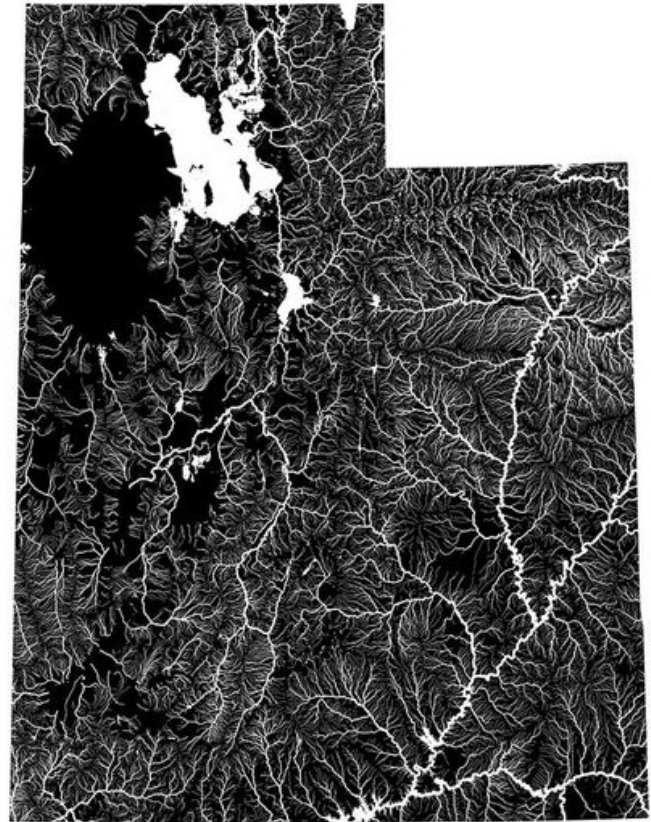
Grand Staircase (Utah/Arizona)



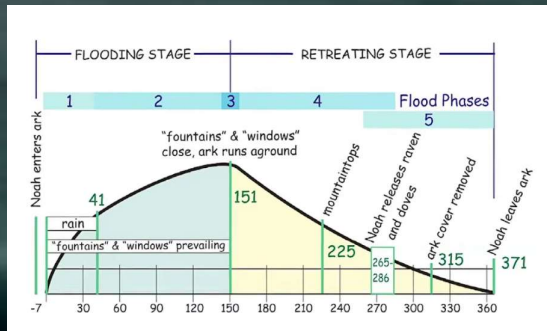
Slow and gradual processes
over millions and billions
of years.

THE STATE OF UTAH HYDROLOGICAL MAP

WATERWAYS BASED ON STRAHLER STREAM ORDER



Global Flood Model (Genesis 6-9)





Monument Valley
Utah/Arizona

Glenn Canyon Dam:

1983



https://www.youtube.com/watch?v=v98omCq1kRA&ab_channel=AwesomeScienceMedia

0:23 – 3:02

Providence Canyon State Park – Georgia

1800s



Burlingame Canyon - Washington:

1904



Grand Canyon - Arizona:

Conchoidal fractures

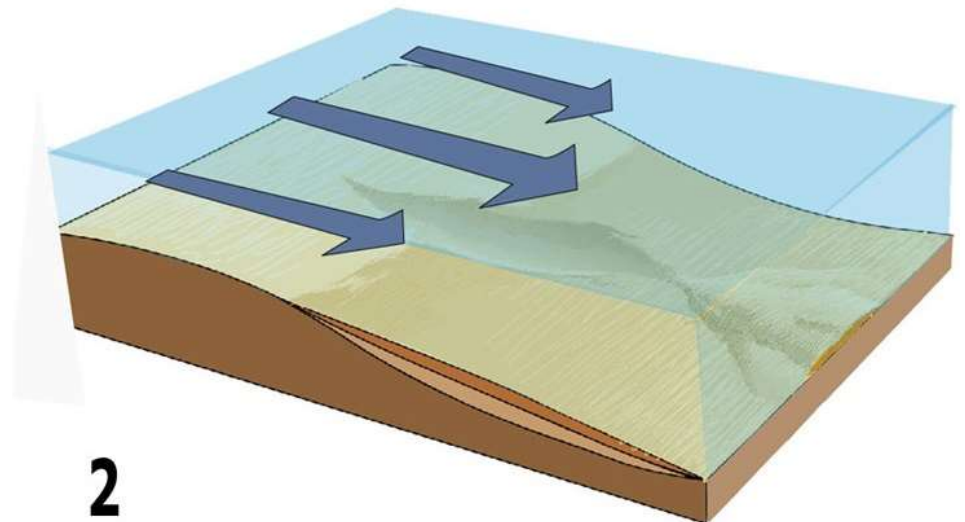
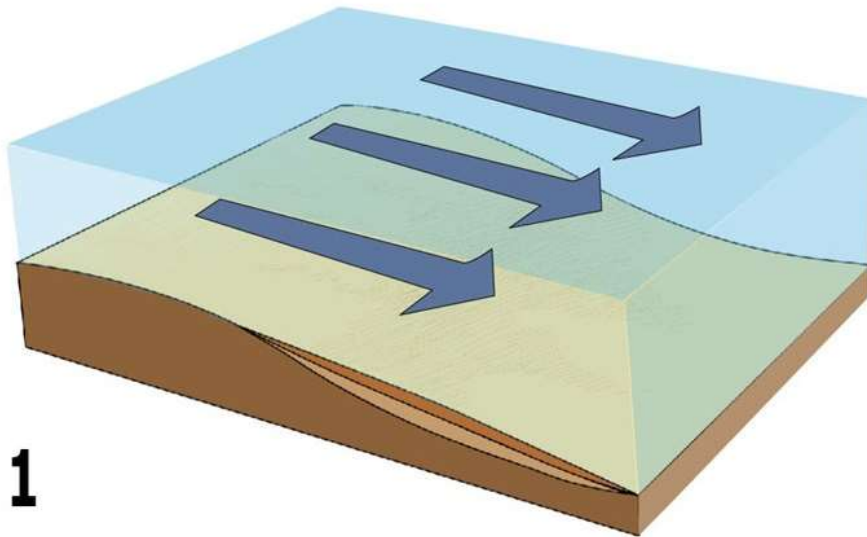


Evidence for a Global Flood:

A. Planation surfaces.

B. Massive planetary erosion.

C. Channelized flow. Narrow currents formed our major land features.



Formation of the Grand Canyon:

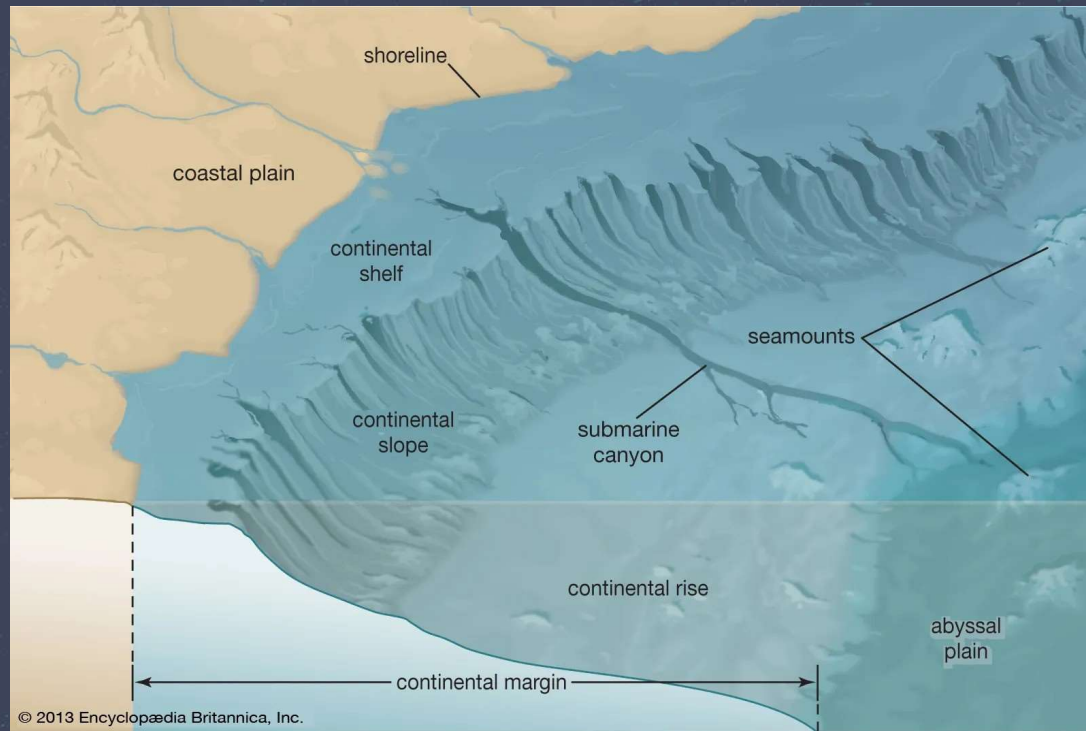


https://www.youtube.com/watch?v=f9cYWZ2UU1M&t=309s&ab_channel=IsGenesisHistory%3F

2:21 – 4:55

Where is much of the flood sediment?

The continental shelf



Where is much of the flood sediment?

The continental shelf



Evidence for a Global Flood:

A. Planation surfaces.

B. Massive planetary erosion.

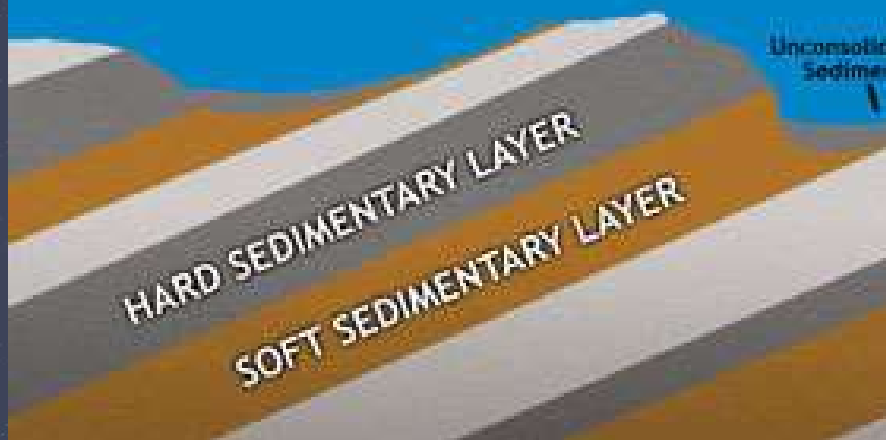
C. Channelized flow

D. Rounded boulders

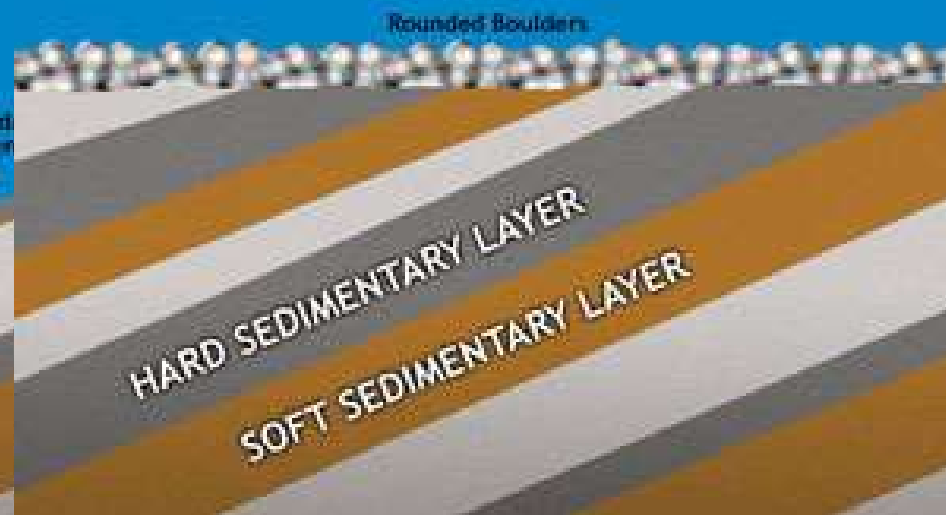
Evidence for a Global Flood:

D. Rounded boulders

What we expect based on uniformitarian erosion

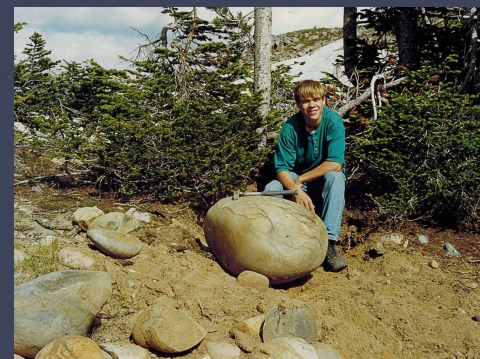
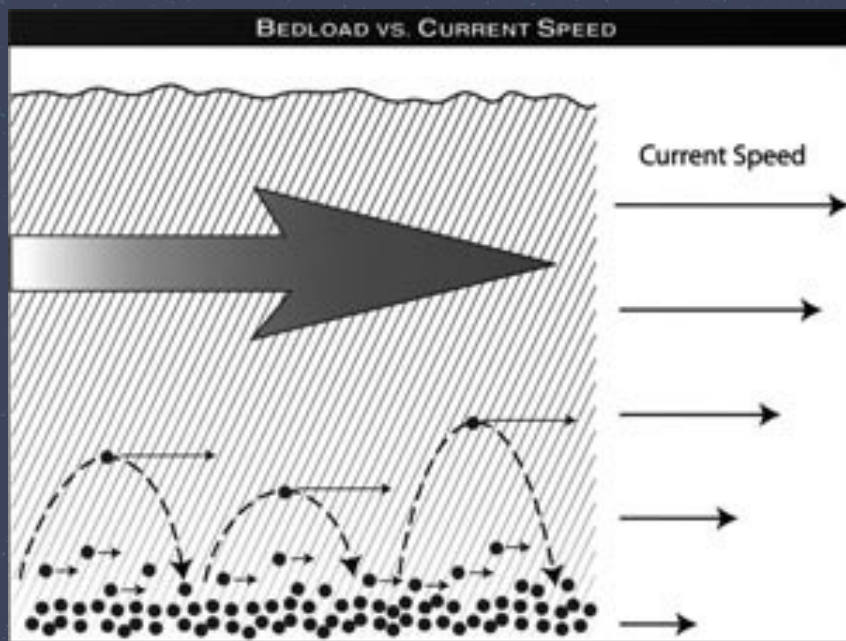


What we often find



Evidence for a Global Flood:

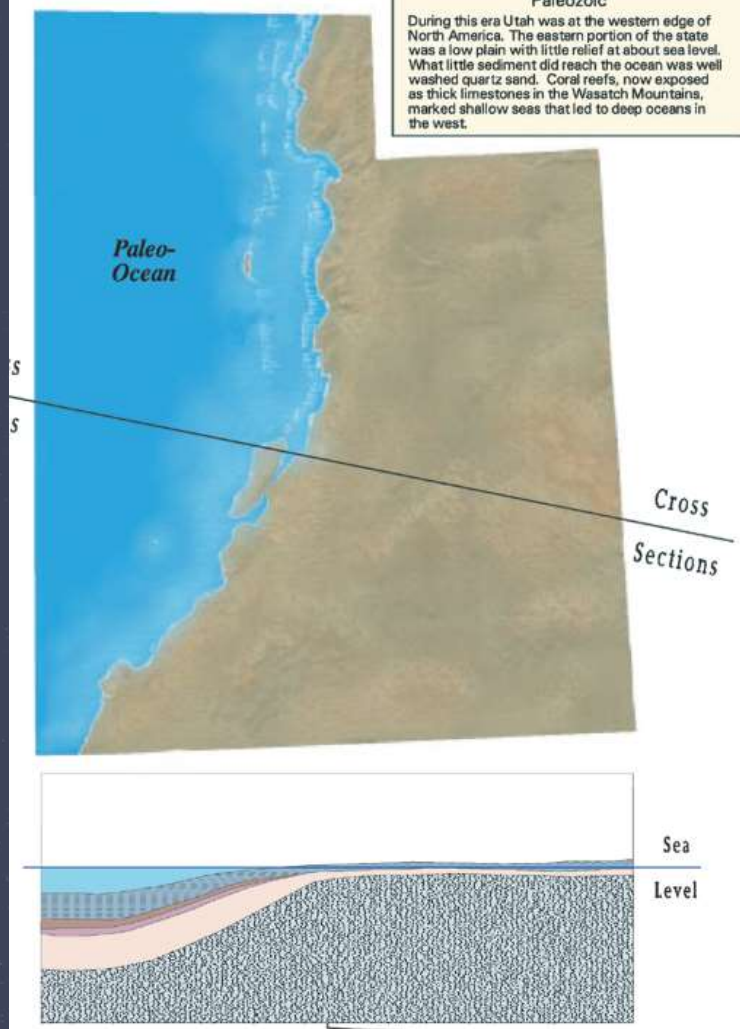
D. Rounded boulders



Current Erosion Rate?

40 feet per million years

**The Early Years:
Paleozoic**
During this era Utah was at the western edge of North America. The eastern portion of the state was a low plain with little relief at about sea level. What little sediment did reach the ocean was well washed quartz sand. Coral reefs, now exposed as thick limestones in the Wasatch Mountains, marked shallow seas that led to deep oceans in the west.



Current Erosion Rate of Hawaii:

5 inches per year.



https://www.youtube.com/watch?v=aj3RMK-ciPU&ab_channel=InstituteforCreationResearch%28ICR%29

0:00-0:57

Current Erosion Rate of Chimney Rock (Nebraska):

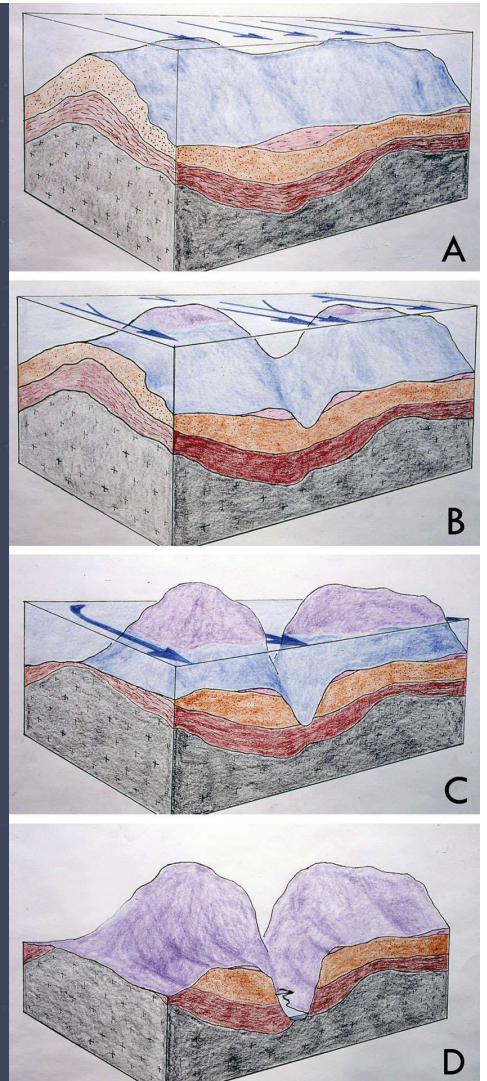
?? Inches per year.



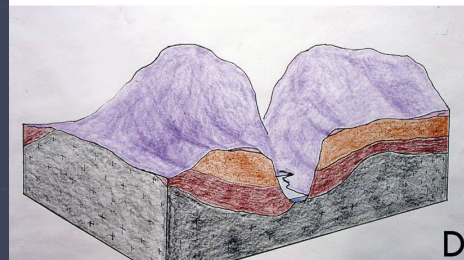
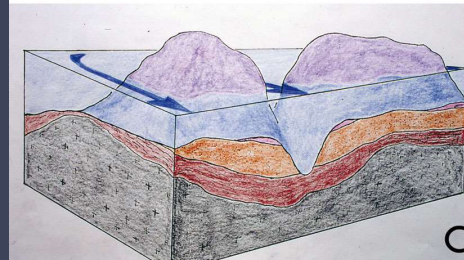
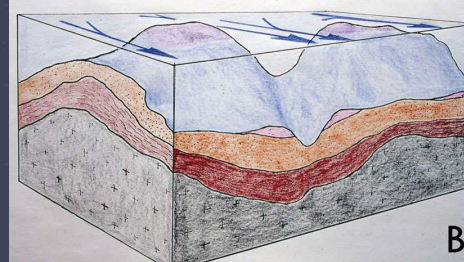
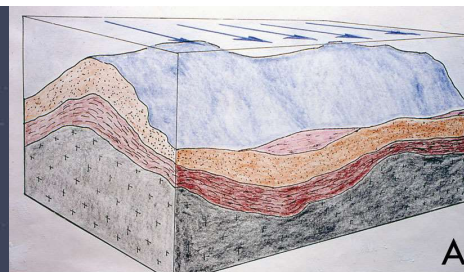
Evidence for a Global Flood:

- A. Planation surfaces.**
- B. Massive planetary erosion.**
- C. Channelized flow**
- D. Rounded boulders**
- E. Water and wind gaps**

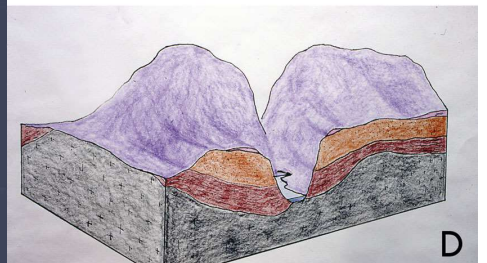
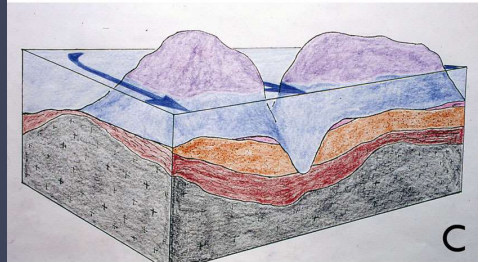
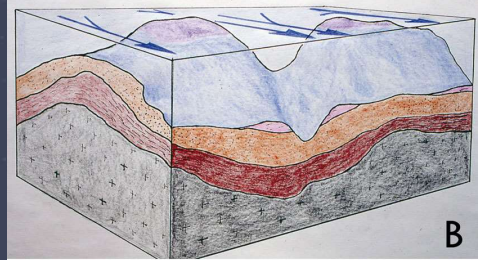
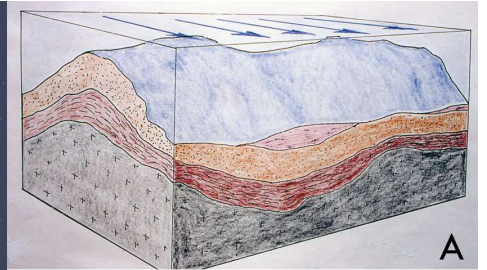
Evidence for a Global Flood: **E. Water and wind gaps**



Evidence for a Global Flood: **E. Water and wind gaps (Devils Gate, Wyoming)**



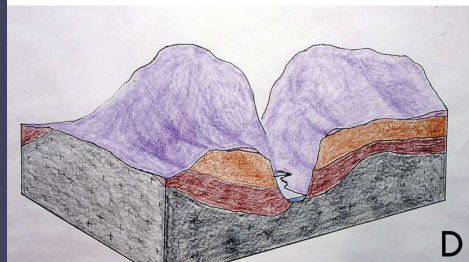
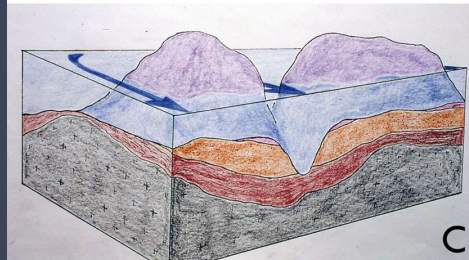
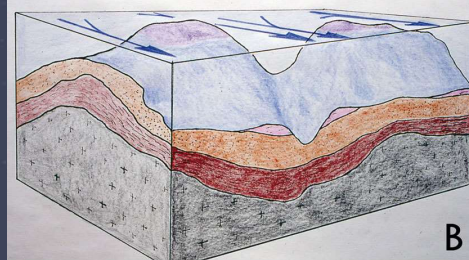
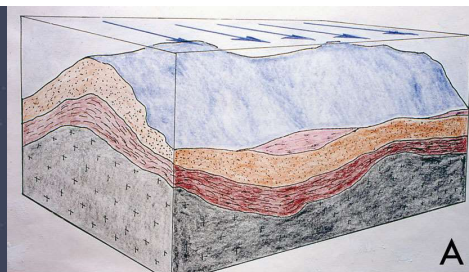
Evidence for a Global Flood: **E. Water and wind gaps (Cody, Wyoming)**



Evidence for a Global Flood: **E. Water and Wind Gaps Split Mountain, Utah**

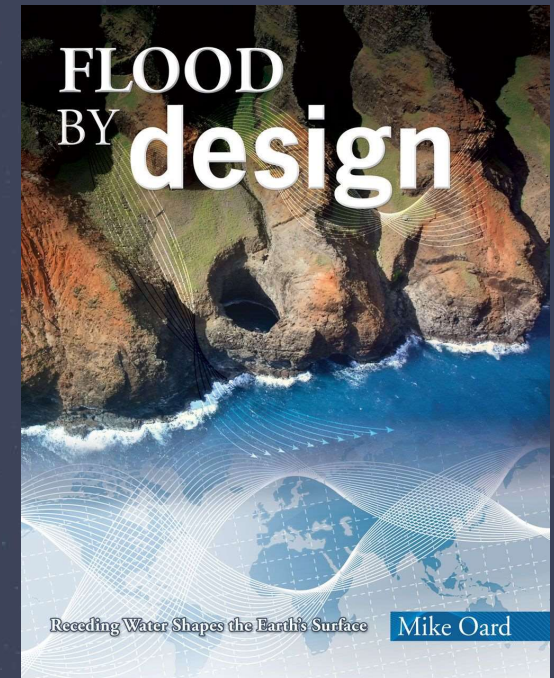


Evidence for a Global Flood: **E. Water and Wind Gaps Delaware**



Evidence for a Global Flood:

- A. Planation surfaces.**
- B. Massive planetary erosion.**
- C. Channelized flow**
- D. Rounded boulders**
- E. Water and wind gaps**



A beach:



Western Nebraska:



Western Nebraska:

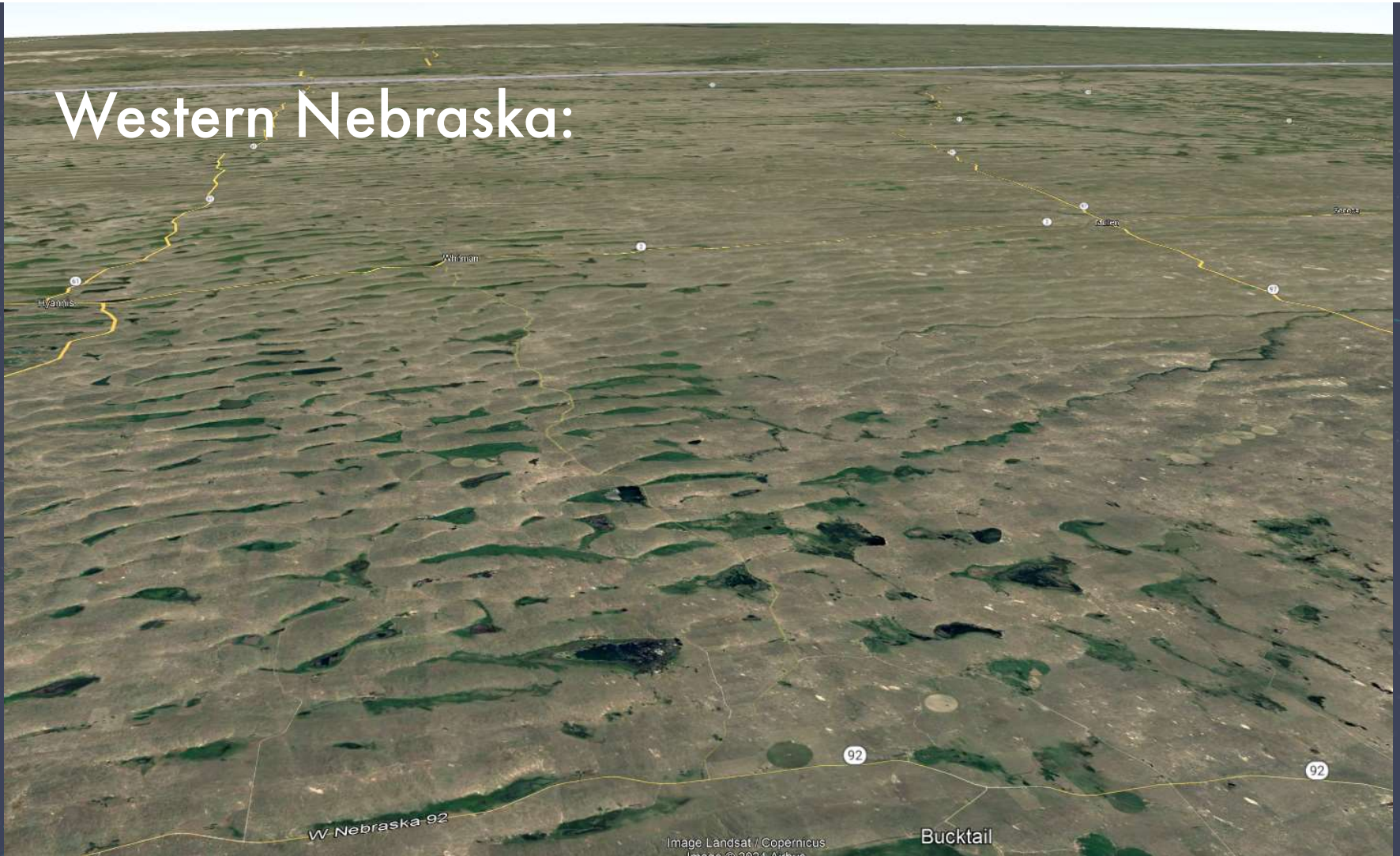


Image Landsat / Copernicus
Image © 2024 Airbus

Bucktail

W-Nebraska 92

92

92

Hyannis

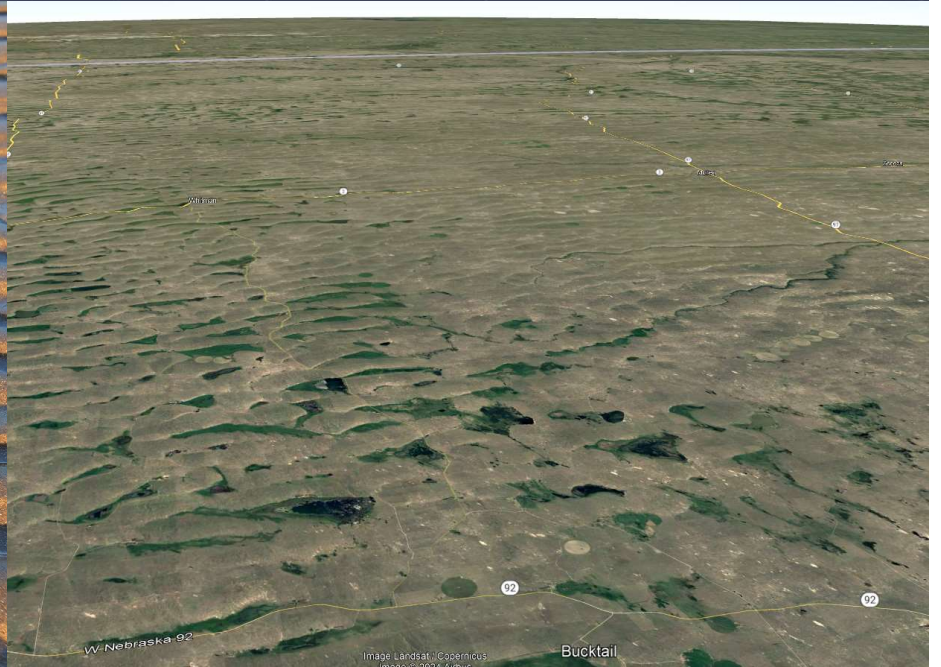
Whitman

Kearney

A beach:



Western Nebraska:



1 Peter 3:20

Because they formerly did not obey, when God's patience waited in the days of Noah, while the ark was being prepared, in which a few, that is, eight persons, were brought safely through water.

Discussion Questions:

1. What did you learn tonight? What stood out to you?
2. What did you enjoy about the Ark and the Darkness movie?
3. What erosional feature is the most powerful evidence for the flood?
4. We have three lectures left. What is your most pressing question? Send those questions to Josh. 801.520.5534
josh@trc.life
5. What do the flood waters from which Noah and his family were saved teach us (1 Peter 3:19-21)?
6. Have a few people pray.



God's Grand Design

Exploring Origins in Science and Scripture